

WOW

WORLD OF WOOD

---

WorldOfWoodLatam.com

TROPICAL LIVE EDGE SLABS  
SOURCED IN LATIN AMERICA

# WOW

## ABOUT OUR BUSINESS

---

- We source tropical Live Edge Slabs out of Latin American countries.
- Countries we source from include Panamá (Where our sourcing office is located), Colombia, Nicaragua, Costa Rica, Honduras and more.
- Our market is aimed towards the United States of America and we sell in Panamá also.



# WOW

## OUR PRODUCTS



Our products Include the following items:

- Raw, rough cut, non-dried and non-flattened Live Edge Slabs.
- Kiln Dried, rough cut, non flattened Live Edge Slabs.
- Kiln Dried and flattened Live Edge Slabs.
- Specialty pieces such as Roots and Cookies (Not Kiln Dried).



# WOW

## Species Available

The species we work with and their countries of origin are:

- Parota (Guanacaste) – Panamá, Colombia, Costa Rica, Honduras.
- Dragonwood (Amarillo) – Panamá.
- Monkey Pod (Cenizaro) – Nicaragua.
- Zapatero (Pilón) – Costa Rica, Panamá.
- Grand Cashew (Espavé) – Panamá.
- Saman – Colombia.
- Nogal – Nicaragua, Honduras.
- Cedro Espino – Panamá.
- Amargo Amargo – Panamá.
- *Mappa Burl* – France.



# WOW

## SHIPPING, EXPORT AND VOLUME

---

We organize and provide all of the shipping and export requirements for you!

- We take care of the shipping, logistics and exportation out of the country of origin, whatever that country may be.
- Because of shipping and export costs, we generally try to ship you full 40 foot containers of slabs (around 8500 board feet). This way, the shipping costs stay low per board foot.
- We are very open to finding solutions for whatever volume you require and we will quote whatever amount of slabs you need. Just let us know.



# WOW

## FINISHED IMAGES OF SPECIES

---



PAROTA



DRAGONWOOD



MONKEY POD

# WOW

## FINISHED IMAGES OF SPECIES

---



ZAPATERO



GRAND CASHEW



SAMAN



PURPLEHEART

# WOW

## FINISHED IMAGES OF SPECIES

---



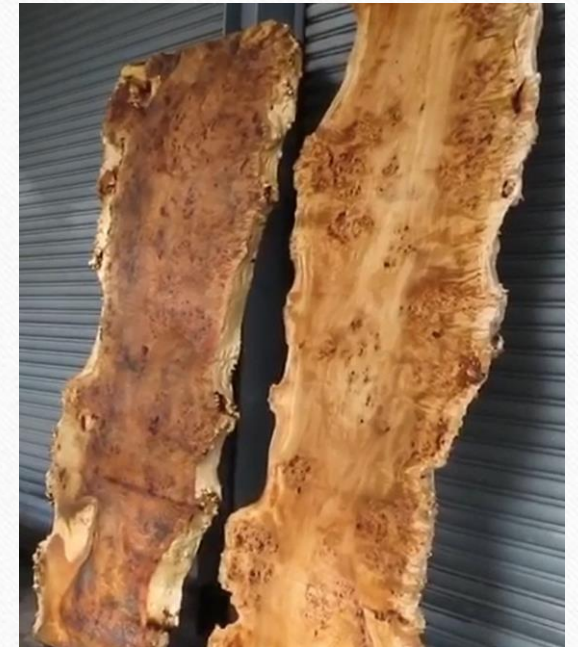
NOGAL



CEDRO ESPINO



AMARGO AMARGO



MAPPA BURL



# OFFER!

## MAPPA BURL NOW AVAILABLE!

Beautiful Burl slabs out of France!

Mappa Burl slabs out of France at unbelievable prices, helping YOU to get ahead of the COVID crisis. Kiln dried to 10% - 12%.

Varying sizes up to 40" wide x 10ft long x 3" thick.

Call or email Troy now to get yours at:

[Troy@WorldOfWoodLatam.com](mailto:Troy@WorldOfWoodLatam.com)

+507 6350 6895

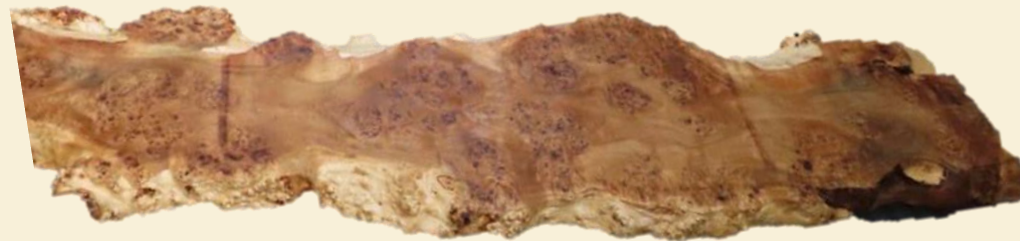


**WOW**  
WORLD OF WOOD  
WorldOfWoodLatam.com

~~\$9.10/BF~~ **\$7.05/BF\***

\*Pricing on 40 foot container loads landed at your nearest US Port (Includes Shipping).

\*Pricing valid until July 15th 2020



# WOW

## SIZES OF SLABS

We generally try to maintain a minimum of 80cm wide x 2.4 meters long on all our species. However, we do include smaller slabs in all shipments, so as to maintain good variety, unless otherwise requested.

Maximum sizes available (maximum sizes of available slabs are always changing and we cannot guarantee the sizes below although we have supplied these sizes in the past).

- Zapatero - 6.9 Meters (22.8 feet or 274 inches) long x 1.37 Meters (54 inches) wide
- Parota/Monkey Pod/Saman - 3 Meters long x 1.8 Meters wide or 3 Meters long x 1.8 Meters wide
- Dragonwood/Grand Cashew - 4 Meters long x 0.95 Meters wide
- Mappa Burl - 3 Meters long x 1.2 Meters wide



# WOW

## PRICING (All pricing in USD)

### Pricing on Raw, non-dried, rough cut slabs:

Species	40 Foot Container (not including shipping)		40 Foot Container landed at your door in USA		10 Slabs (1000 BF) minimum (Plus Shipping)	Individual slabs (Landed at the nearest port in USA)
	Price Per BF	Price Per M3	Price Per BF	Price Per M3	Price Per BF	Price per BF
Parota	\$4.50	\$1,906.99	\$5.00	\$2,118.88	\$7.00	N/A
Nogal	\$5.00	\$2,118.88	\$5.50	\$2,330.77	\$7.50	N/A
Saman	\$4.50	\$1,906.99	\$5.00	\$2,118.88	\$7.00	N/A
Purpleheart	\$3.50	\$1,483.22	\$4.00	\$1,695.10	N/A	N/A



\*Lead times between 1 – 3 months and vary depending on availability from mills.

\*if you are a distributor, we are open to creativity on pricing for large quantities.

# WOW

## PRICING

### Pricing on Kiln dried, rough cut slabs:

Species	40 Foot Container (not including shipping)		40 Foot Container incl. Shipping - landed at your door in USA		10 Slabs (1000 BF minimum) (Plus Shipping)	Individual slabs (Minimum 100 BF), Landed at the nearest port in USA.
	Price Per BF	Price Per M3	Price Per BF	Price Per M3	Price Per BF	Price per BF
Parota	\$6.75	\$2,860.49	\$7.30	\$3,093.56	\$7.00	\$22.00
Dragonwood	\$6.45	\$2,733.36	\$7.00	\$2,966.43	\$10.00	\$25.00
Grand Cashew	\$6.45	\$2,733.36	\$7.00	\$2,966.43	\$10.00	\$25.00
Purpleheart	\$5.50	\$2,330.77	\$6.05	\$2,563.84	N/A	N/A
Cedro Espino	N/A	N/A	N/A	N/A	\$10.00	\$25.00
Amargo Amargo	N/A	N/A	N/A	N/A	\$10.00	\$25.00
Mappa Burl	\$8.50	\$3,602.10	\$9.10	\$3,856.36	N/A	N/A
	<b>\$6.50*</b>	<b>\$2,754.54*</b>	<b>\$7.05*</b>	<b>\$2,987.62*</b>		

\*Price reduction valid until 15<sup>th</sup> of July 2020.

Lead times between 2 – 5 months and vary depending on availability from mills.



# WOW

## PRICING

### Pricing on Kiln dried, flattened slabs:

Species	40 Foot Container landed at your door in USA		10 Slabs (1000 BF) minimum (Plus Shipping)	Individual slabs (Minimum 100 BF), (Landed at the nearest port in USA)
	Price Per BF	Price Per M3	Price Per BF	Price per BF
Parota	\$9.25	\$3,919.93	\$10.25	\$25.00
Zapatero	\$9.25	\$3,919.93	\$10.25	N/A
Dragonwood	\$8.00	\$3,390.21	\$10.25	\$25.00
Grand Cashew	\$8.00	\$3,390.21	\$10.25	\$25.00
Purpleheart	\$8.00	\$3,390.21	N/A	N/A
Cedro Espino	N/A	N/A	\$10.25	\$25.00
Amargo Amargo	N/A	N/A	\$10.25	\$25.00
Other Species	Please ask for other species required.			

\*Lead times between 2 – 5 months and vary depending on availability from mills.



# WOW

## PRICING

Pricing on dry slabs now in Rogers, Arkansas:

Species	10 Slabs minimum (Plus Transport) Price per BF	Individual slabs, (Plus Transport) Price per BF
Parota	\$13.50	\$15.00
Monkey Pod	\$13.50	\$15.00

\*Lead time – Now available. Please ask us for photos.



# WOW

## MIXING SPECIES

---

### Mixing of species

If you're looking for a mix of species we can provide containers of mixed species, however the species will depend on their country of origin.

Examples below.

- Mix of raw or dried Parota/Saman – Colombia.
- Mix of raw Parota/Nogal – Nicaragua/Honduras
- Mix of dried Zapatero, Parota, Monkey Pod, & various other species available – Costa Rica.
- Mix of raw or dried Parota, Dragonwood, Grand Cashew, Cedro Espino, Amargo Amargo – Panamá.



# WOW

## WORLD OF WOOD

WorldOfWoodLatam.com

---

Thank you!

Troy Wilkinson – Owner/Manager

Troy@WorldOfWoodLatam.com

Tel: +507 6350 6895

 @worldofwoodlatam

 @worldofwoodlatam